



# XPLORER USER GUIDE

V.1.1

[SUPPORT@ERISINFO.COM](mailto:SUPPORT@ERISINFO.COM)

## Table of Contents

Table of Contents.....	1
Introduction.....	3
Ordering ERIS Xplorer.....	4
Access to Xplorer .....	5
Overview of ERIS Xplorer.....	5
Order Details.....	5
Hide Site/Show Site.....	6
Address/Coordinates Search.....	6
Map/Satellite Views .....	6
Re-centre Map .....	7
User Guide .....	7
Map Legend .....	7
Clustered Sites .....	8
Record Review .....	8
Xplorer Navigation Bar .....	9
ERIS Points.....	9
Source Filter .....	10
All Data .....	10
Customize 'All Data' View.....	12
Unplottables .....	12
Report Summary .....	13
Image Overlay.....	13
Viewer .....	13
RSC Layers .....	14
ANSI (Area of Natural and Scientific Interest) Map .....	15
Bedrock Geology Map .....	15
Surficial Geology Map.....	16
Soil Map.....	16
OBM Map (Ontario Base Map).....	17

<b>Physiography Map</b> .....	<b>17</b>
<b>PSR – Physical Setting Report</b> .....	<b>18</b>
<b>PSR Layers</b> .....	<b>18</b>
<b>Soil Map</b> .....	<b>18</b>
<b>Wetland Map</b> .....	<b>19</b>
<b>ANSI, Surficial and Bedrock Geology</b> .....	<b>20</b>
<b>Contour and PSR Relief Map</b> .....	<b>20</b>
<b>Reports</b> .....	<b>21</b>
<b>Custom Saved Maps</b> .....	<b>21</b>
<b>Measure Tool</b> .....	<b>22</b>
<b>Drawing Tool</b> .....	<b>23</b>
<b>Location Marker</b> .....	<b>23</b>
<b>Shapes</b> .....	<b>24</b>
<b>Adding Comments</b> .....	<b>24</b>
<b>Delete</b> .....	<b>25</b>
<b>Hand Icon</b> .....	<b>25</b>
<b>Print</b> .....	<b>25</b>
<b>Customer Service/Contact</b> .....	<b>26</b>

## Introduction

ERIS Xplorer is a powerful, interactive tool that allows the user to layer data and historical images. Xplorer is an innovative way to visualize and analyze your data.

Features of ERIS Xplorer:

- Overlay data and multiple images over current street layers and compare changes over time.
- Filter data sources and view only the desired data sources on the map.
- Switch between 'street view', 'satellite', or 'terrain' base layers to more effectively analyze the project property and related data.
- Calculate the distance between 2 points or within a polygon area using the 'Measure Tool'.
- Draw and/or add comments directly to any layer, then print to PDF, for easy sharing between colleagues and clients.
- Look up specific addresses or key words using the 'Search' functionality.
- Reports and historical products ordered will be delivered and housed within the application – eliminating the need to leave the application to download reports.
- Database Report section - Report Summary is always included with Xplorer; download the report from the 'Reports' tab.
- User-friendly interface with functionalities such as key word searches, filtering by source, transition and easy workflows



## [Ordering ERIS Xplorer](#)

ERIS Xplorer is available as an add-on feature to any Canadian Database Report and Topo Maps. If not part of a package, Xplorer can be added to any order by selecting the option on the '**Select Historicals/Products**' page of the Online Order Form.

ERIS ENVIRONMENTAL HIGH INFORMATION SERVICES

Hello ERIS [View cart](#) [My Account](#) [My Orders](#) [Sign Out](#)

1-866-517-5204 [info@erisinfo.com](mailto:info@erisinfo.com) [ORDER](#)

HOME > ORDER A REPORT

Locate Property Select Report Select Databases **Select Historicals/Products** Project Information Order Summary View Cart Checkout

### Select Historicals/Products

All amounts in Canadian dollars

**Aerial Photographs**

- National Collection - Digital (PDF) \$30  
(Scale: 1:5000 to 1:50000, Research Fee: \$20)
- National Collection - Laser \$30  
(Scale: 1:5000 to 1:50000, Research Fee: \$20)

**Topographic Map**

- Ontario Base Map (OBM) \$25
  - Regular Service (Same day as ERIS report or 7 Business Days)  
(Scale: 1:10000 and 1:20000)
- ANSI Map & Ontario Base Map (OBM) \$40  
(Scale: 1:10000 and 1:20000)
- National Topographic Maps \$25  
(Scale: 1:50000)

**ERIS Xplorer**

- Data and Historical Layer Viewer

<< Previous [Next >>](#)

ERIS Xplorer may be added to any one of the following products or combination of products.

- Database Reports
- Topographic Maps

The Xplorer option will not be available if the order is placed **only** with Aerials, City Directories, Land Title Searches and Insurance Products.



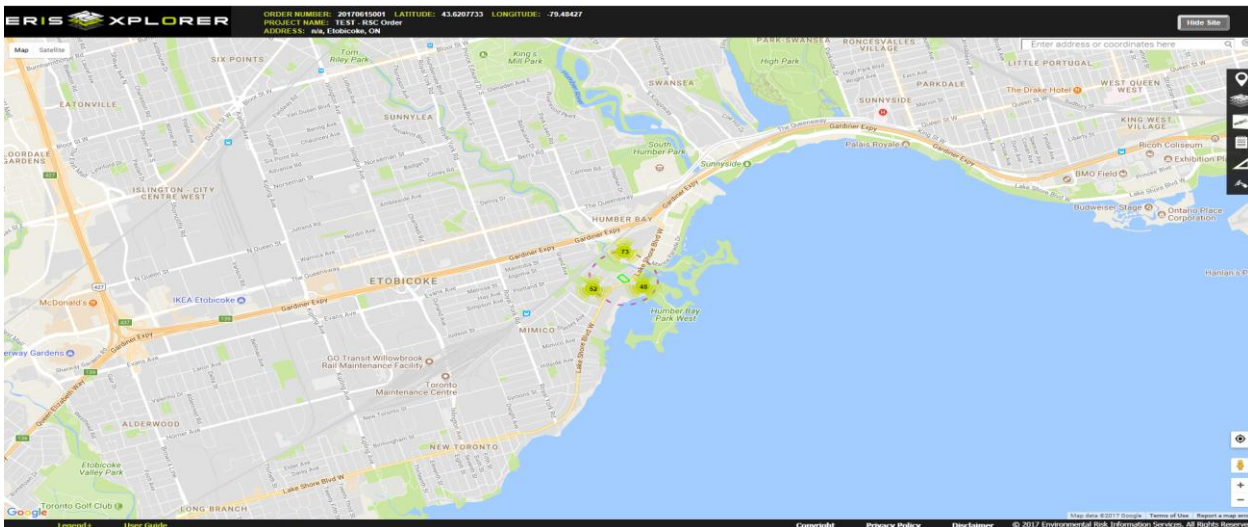
## [Access to Xplorer](#)

Each order placed with Xplorer will have a unique URL. This URL can be accessed by clicking on the 'ERIS Xplorer' link under 'My Orders => Download Reports'. Clicking on the link opens ERIS Xplorer for that particular order in a separate browser window.

2017/06/26	20170626001	Site Regis 3998 Airport Rd Merritt, BC P.O.No.:	New	2017/07/03	<a href="#">View Summary</a>	<a href="#">Eris Xplorer</a>	Richardson Mitchell
------------	-------------	--	-----	------------	------------------------------	------------------------------	---------------------

ERIS orders will be processed as per the report type and product(s) chosen by clients.

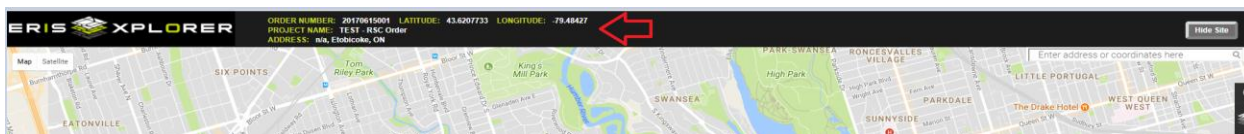
As soon as one of the product(s) or report is fulfilled, clients will be notified by an email and data will be uploaded to Xplorer.



## [Overview of ERIS Xplorer](#)

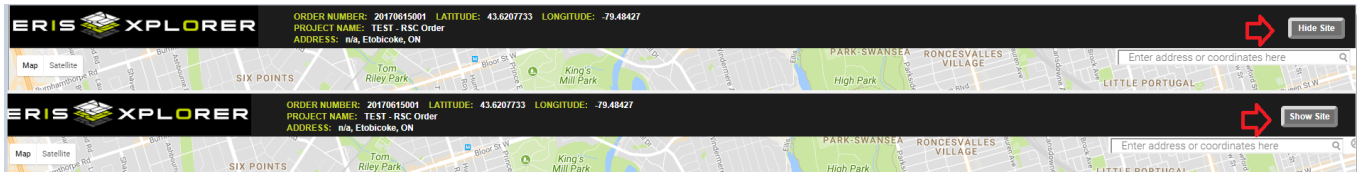
### [Order Details](#)

Within the application, the order details including Order Number, Project Name, Address and Coordinate details are displayed at the top of the page.





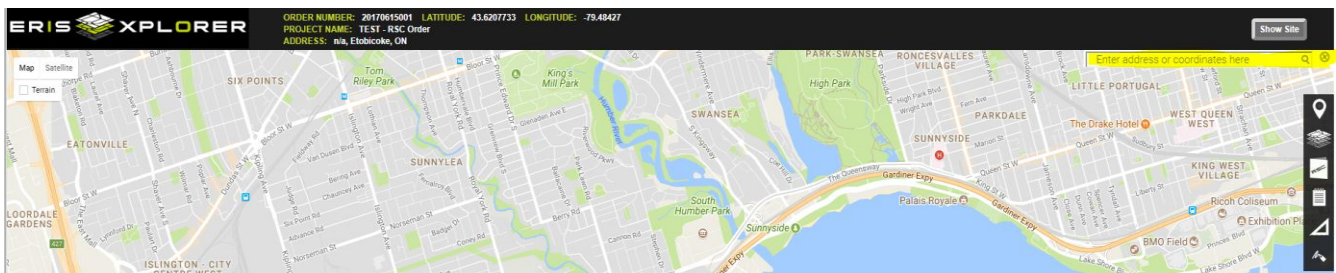
## [Hide Site/Show Site](#)

Users will be able to hide the project property marker by clicking on the 'Hide Site' function, located at the right corner of the header. To show the marker again, simply click on 'Show Site'.



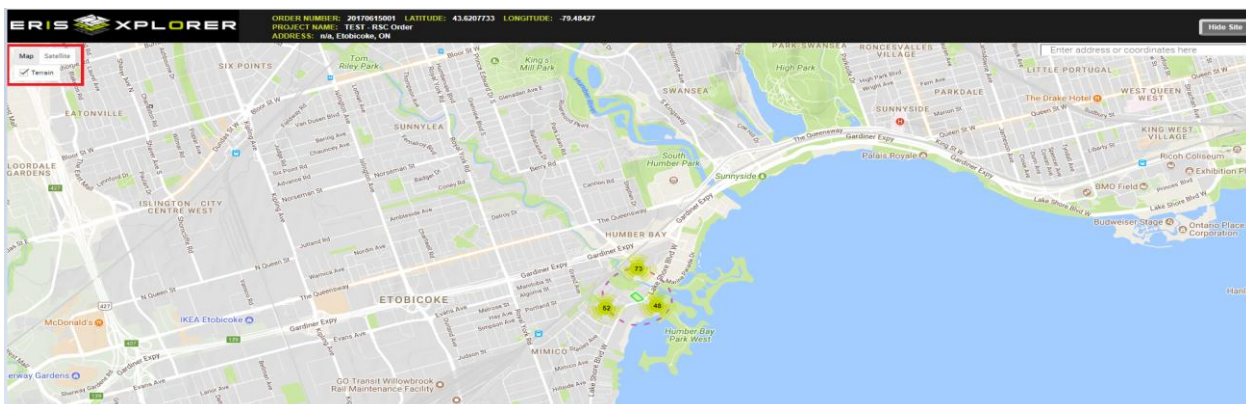
## [Address/Coordinates Search](#)

Address or Coordinates can be entered in the search box in the top left corner of the map window. This feature will help the user in locating a specific address surrounding the project property. Enter the address or coordinates and press 'enter' - the results will be shown on the map with a push pin . To clear the text in the search box, click on the clear  button.

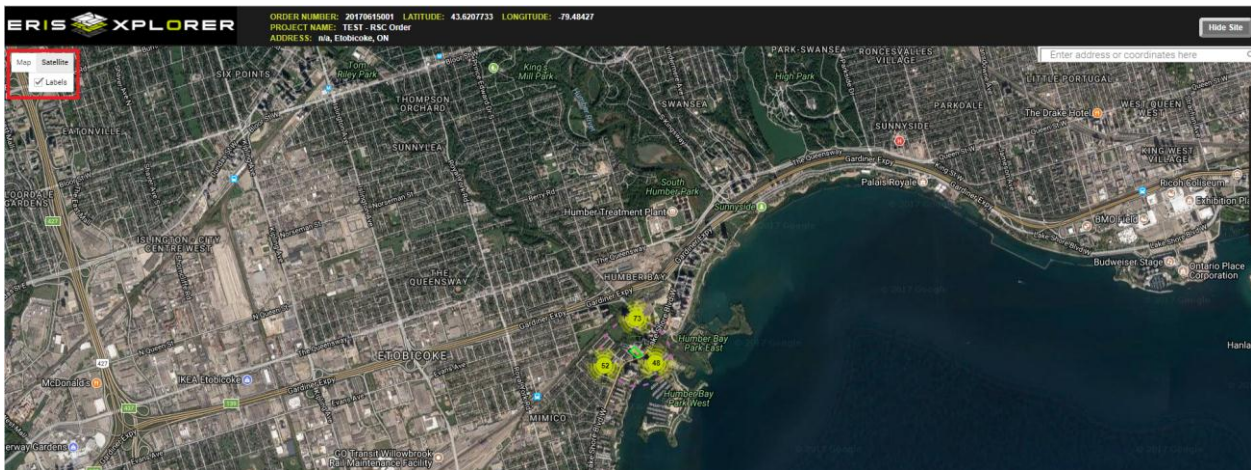


## [Map/Satellite Views](#)

Different layers and views can be turned on and off within Xplorer. When the application first opens, the view is defaulted to a simple Map with streets and points of interest. Within the Map view, the Terrain layer can be turned on by clicking 'Map' on the left corner and selecting the 'Terrain' option.



Satellite imagery may be viewed by clicking on the 'Satellite' option. Street labels can also be turned on and off.



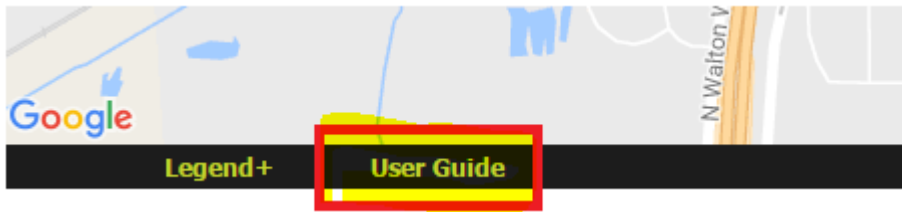
## Re-centre Map



Click on the 'Recenter' button to Centre the screen to the project property.

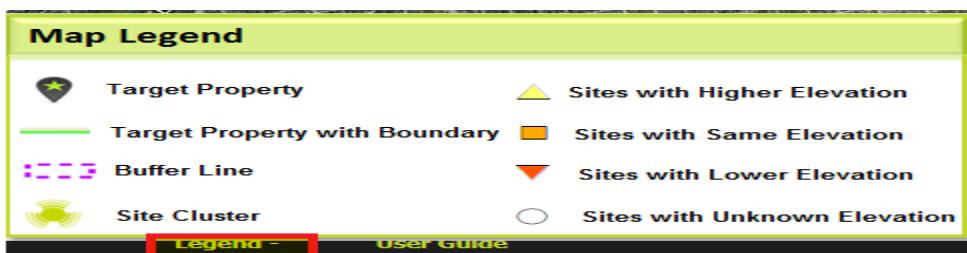
## User Guide

The User Guide is available at the bottom right corner of the application's footer.



## Map Legend

The Map Legend can be viewed by clicking on the text 'Legend', clicking on it again will minimize it.





## Clustered Sites



When the map is zoomed out, sites will be clustered and shown with the above cluster icon. The number in the middle of the icon represents the number of records at that location. When zooming in closer, records are displayed with different icons according to the elevation and each site will be labelled with a Map Key.

*Note: Please refer to the 'Map Legend' for more information on icons.*

## Record Review

- Clicking on any record on the map will display a pop-up window with the associated map key, direction, distance from the subject property, site address and source name.
- To view complete details for the record, click on the DataSource name and a separate window will open.
- If more than one site is plotted at the same point, navigation arrows are available to go from one record to the next record. The first label will indicate how many records are on that one site i.e. '2 of 5'.
- A 'street view' option is also available on the pop up window.
- All symbols on the map and legend correspond to those in the pdf Database Report.

ERIS XPLORER    ORDER NUMBER: 20170615001    LATITUDE: 43.6207733    LONGITUDE: -79.48427  
 PROJECT NAME: TEST - RSC Order  
 ADDRESS: n/a, Etobicoke, ON

Map    Satellite

ERIS - Google Chrome

about:blank

Map Key	Direction	Distance	Elevation	Source
84	NE	0.17mi / 876.49ft	259.28ft	<a href="#">GEN</a>

COMPANY: K Mangat Dentistry Professional Corp  
 ADDRESS: 2198 Lakeshore Blvd West, Etobicoke ON M8V 1A4

PO Box Num:  
 Status: Registered  
 Country: Canada  
 Generator #: ON5663703  
 Approval Yrs:: As of Sep 2016  
 SIC Code:  
 SIC Description:

--Details--  
 Waste Code: 312 P  
 Waste Description: Pathological wastes

1 of 1    84    Dir: NE    Dist(m): 267.15

K Mangat Dentistry Professional Corp  
 2198 Lakeshore Blvd West

[GEN\(Ontario Regulation 347 Waste Generators Summary\)](#)

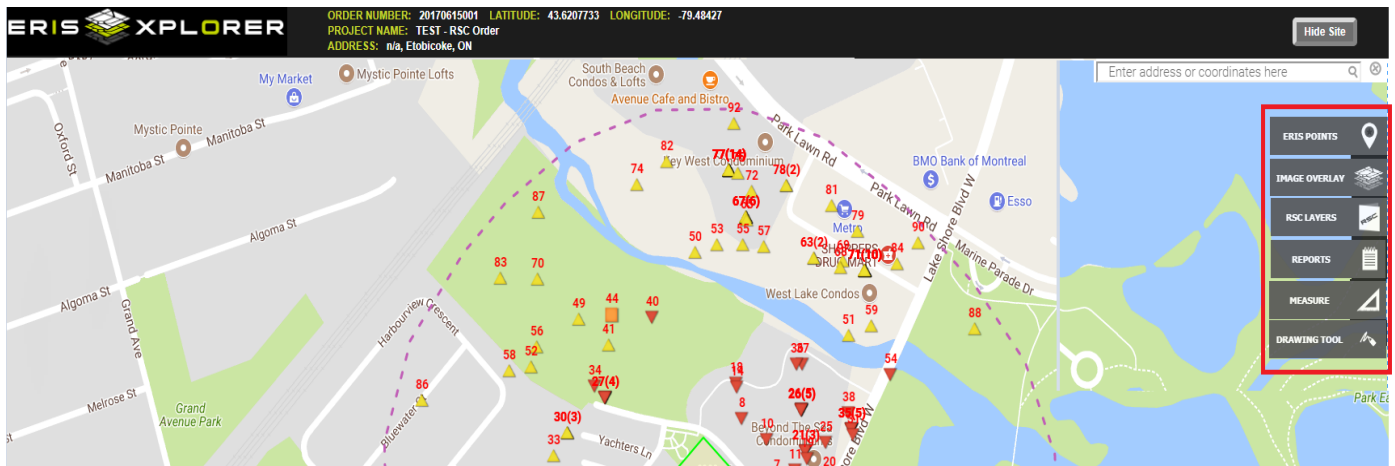
Street View

## Xplorer Navigation Bar

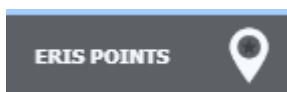
The Xplorer navigation bar is located on the far right side of the screen. The bar contains the following tools:

- ERIS Points
- Image Overlay
- RSC Layers
- PSR Layers
- Reports
- Measure
- Drawing Tool

Once the user clicks on the desired tool, it will open the sub-menu if applicable. The widgets can be closed by clicking on the 'X'.



## ERIS Points



When ERIS Points is clicked, it will open with different options to view the environmental data on the Xplorer platform. When the user clicks on any of the available options, the window will open up with related functionalities.

Options under ERIS Points:

- Filter by Source
- All Data

- Unplottables
- Report Summary

## Source Filter

With the Filter by Source function, users will be able to filter on specific types of risk records. Only filtered sources will be displayed on the map.

Source acronyms and names will be displayed along with total number of hits.

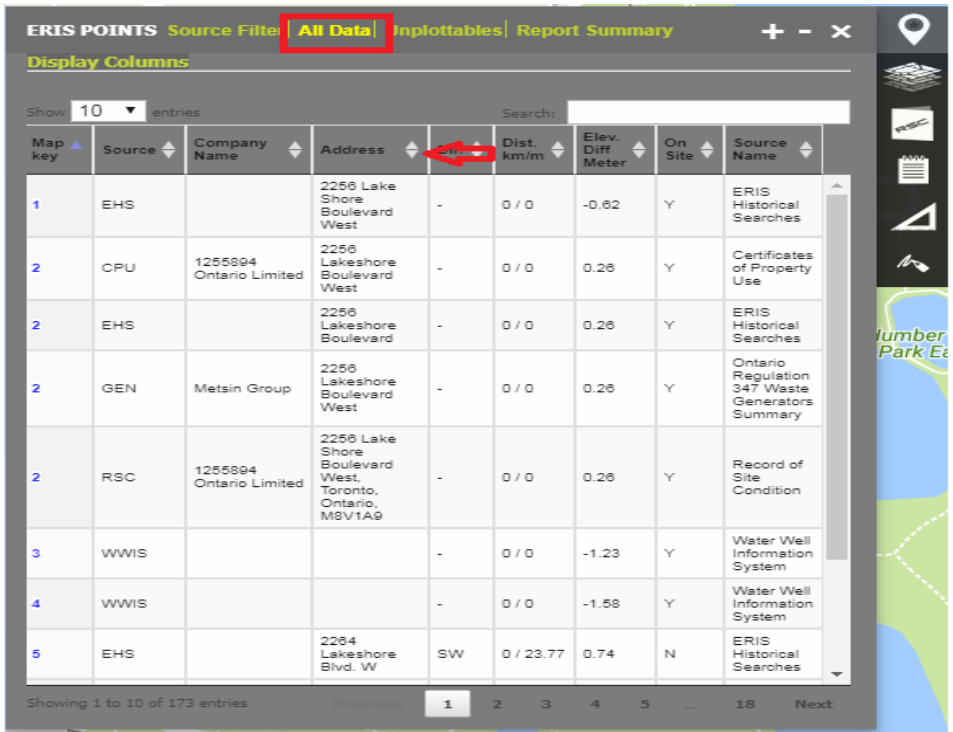
‘Select All’ and ‘Deselect All’ options are available to select or deselect sources with one click.



## All Data

Under the ‘All Data’ tab, all the environmental risk records are displayed in an easy-to-read table format along with the following information - Map Key, On Site, Source, Source Name, Company Name, Address, Latitude, Longitude, Direction, Dist (Km/M) and Elev Diff (M).

In this table view, all of the columns are sortable and the search function will help to narrow down the entries in the table.



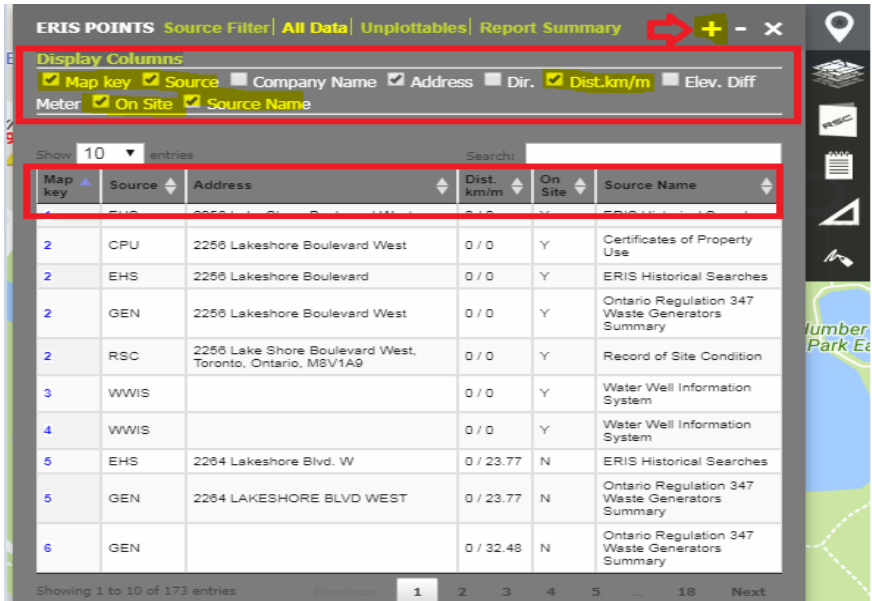
The user will also be able to control how many records are to be displayed by using the 'Show' drop down function.

Map keys in the All Data table are interactive; clicking on the 'map key' will display the record on the map by opening the window with summary details.



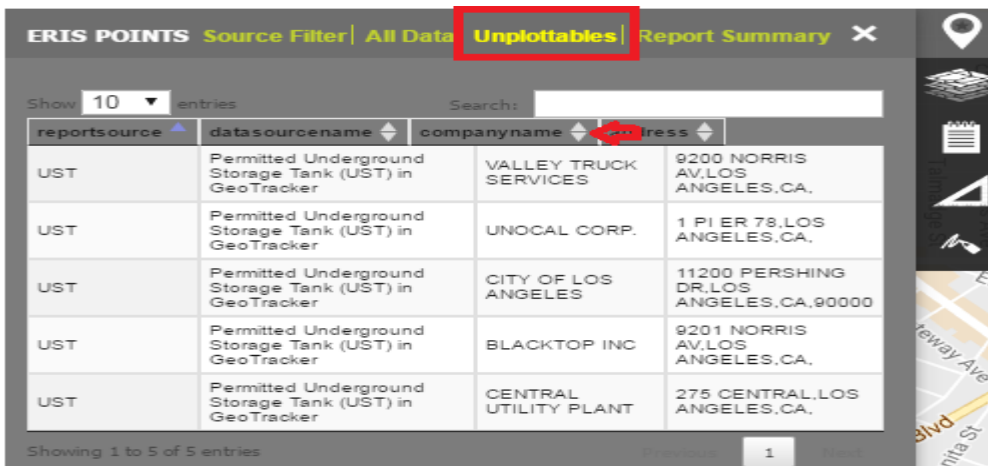
### Customize 'All Data' View

“Display columns” will allow the user to pick and choose the columns / data to be displayed. “+” and “-“at the top right of the tool window will help to expand or contract the size of the current window

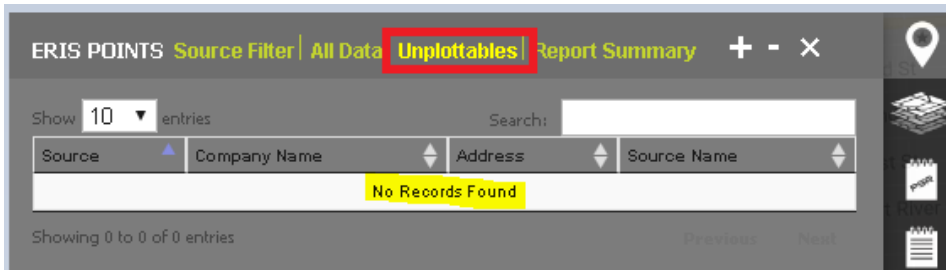


### Unplottables

This section will display all the Unplottable records related to the order. These records could not be plotted due to limited information but could still be of concern. The columns are sortable and the search functionality is available.



If no unplottables found, a message will be displayed as 'No Records Found'



## Report Summary

This section shows the data sources searched, to what distance and how many hits were recorded. A total for each column can be located at the bottom of the table. This report can also be downloaded in Excel format under the 'REPORTS' tab.

Type	Source	Project Property	Boundary to 0.3Km	Total
Federal	EEM	0	0	0
Federal	EIIS	0	0	0
Federal	FCON	0	0	0
Federal	FCS	0	0	0
Federal	FOFT	0	0	0
Federal	GHG	0	0	0
Federal	IAFT	0	0	0
Federal	NATE	0	0	0
Federal	NDFT	0	0	0
Federal	NDSP	0	0	0
Federal	NDWD	0	0	0
Federal	NEBI	0	0	0
Federal	NEBW	0	0	0
Federal	NEES	0	0	0
Federal	NPCB	0	1	1
Federal	NPRI	0	0	0
Federal	PCFT	0	0	0
Federal	TCFT	0	0	0
Private	ANDR	0	4	4

## Image Overlay

### Viewer

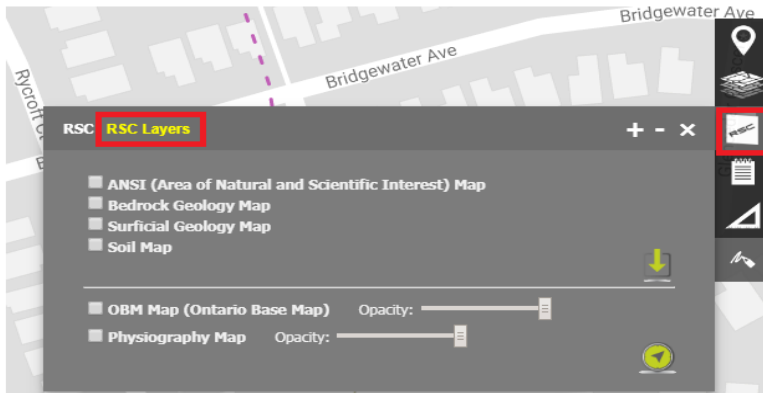
All ordered images are found in this section (Topo Maps). The *Opacity* feature (by moving the slider to the left/right) controls the transparency of the image against the base map and other layers.



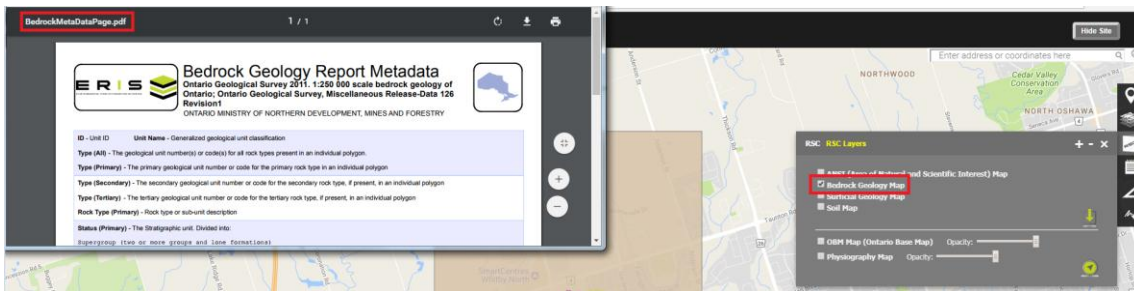
## RSC Layers

\*RSC reports are only available for Ontario.

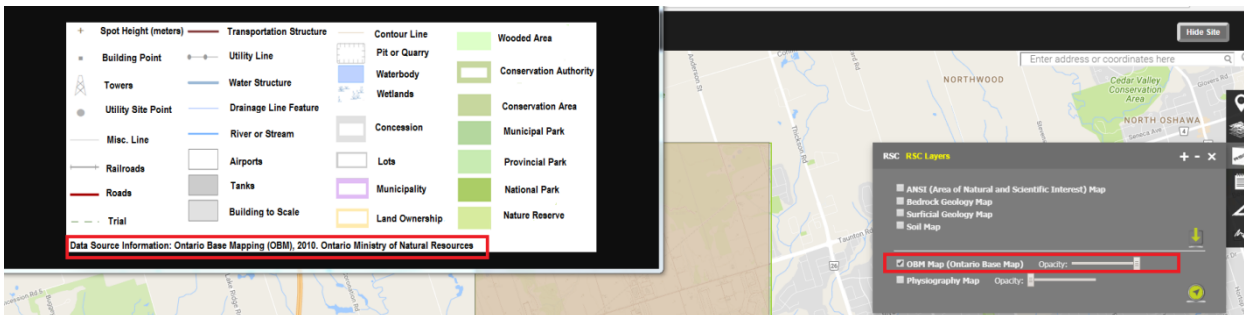
If RSC Urban, Rural or Custom Report is ordered, 6 reference maps are included with their accompanying reports and metadata. The 6 maps are comprised of an ANSI (Area of Natural and Scientific Interest) map, a Bedrock Geology and Surficial Geology map, a Physiography map, an Ontario Base Map (OBM) and a Soil map. These maps can be found under the 'RSC Layers' in Xplorer Navigation bar.



Clicking on the above icon will open up the 'Meta Data' page according to the selected layer.

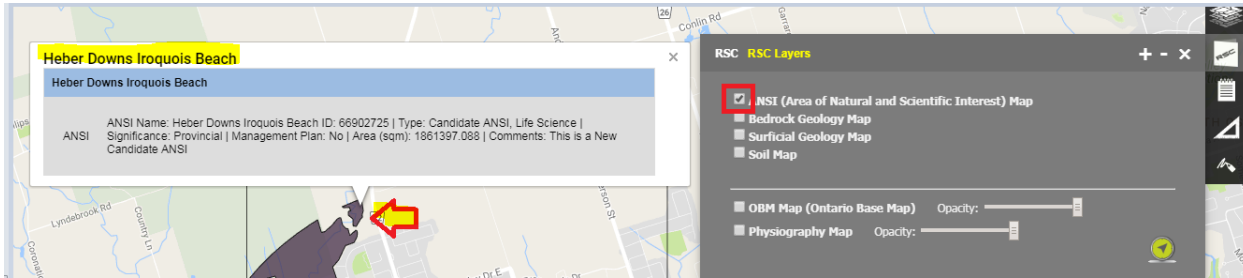


Clicking on the above icon will open up the 'Map Legend' according to the selected layer.



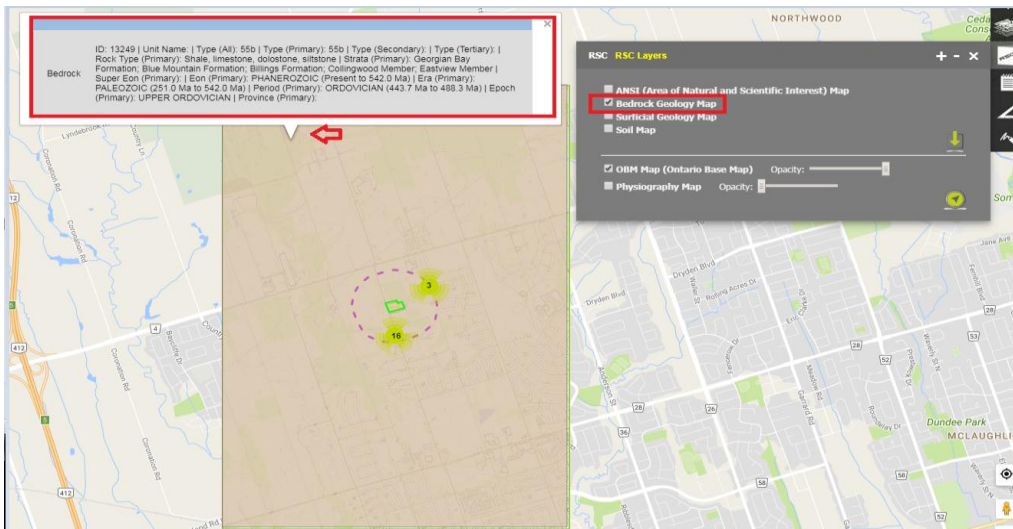
## [ANSI \(Area of Natural and Scientific Interest\) Map](#)

Areas of Natural and Scientific Interest (ANSIs) are lands and waters with features that are important for natural heritage protection, appreciation, scientific study or education. Clicking on the map will display the detail information on the selected unit.



## [Bedrock Geology Map](#)

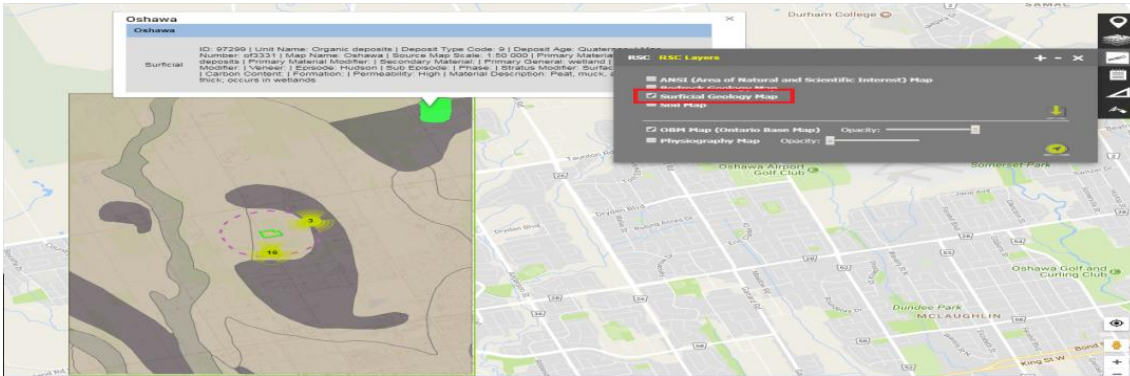
This layer provides detailed bedrock geological information. Clicking on the map will display the detail information on the selected unit.





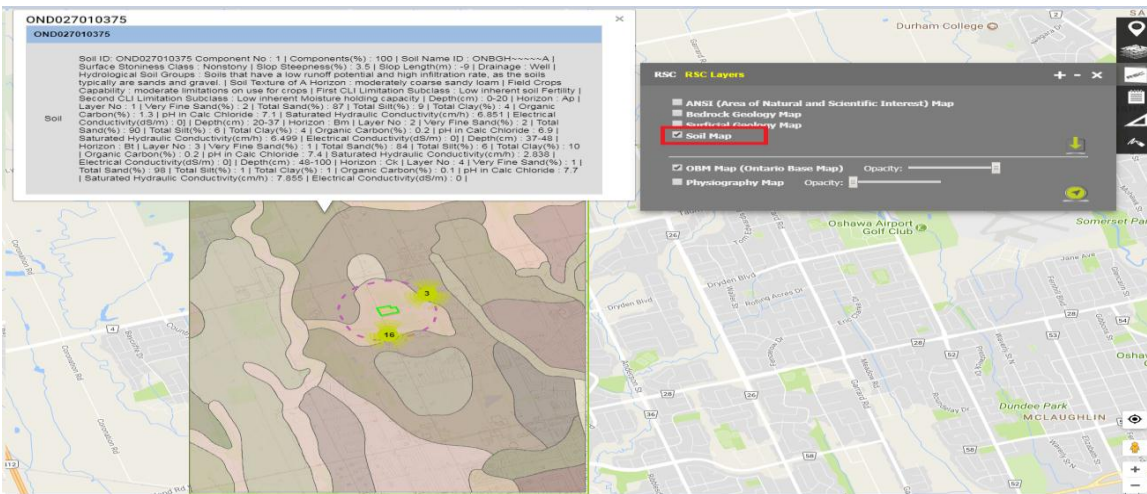
## Surficial Geology Map

This layer provides information on surficial geology features. Clicking on the map will display the detail information on the selected unit.



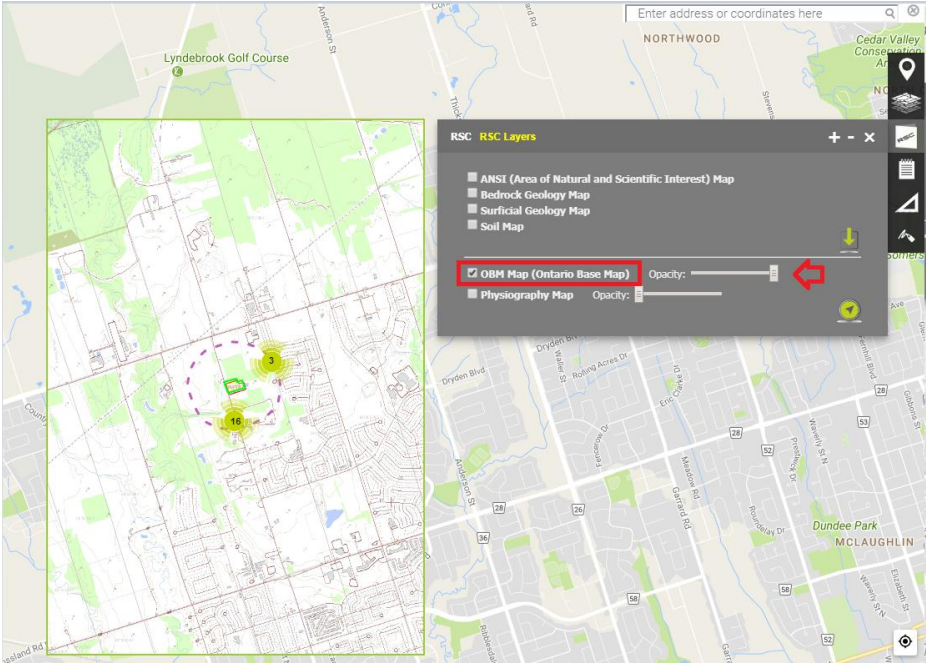
## Soil Map

This layer displays Soil survey data; Clicking on the map will display the detail information on the selected unit.



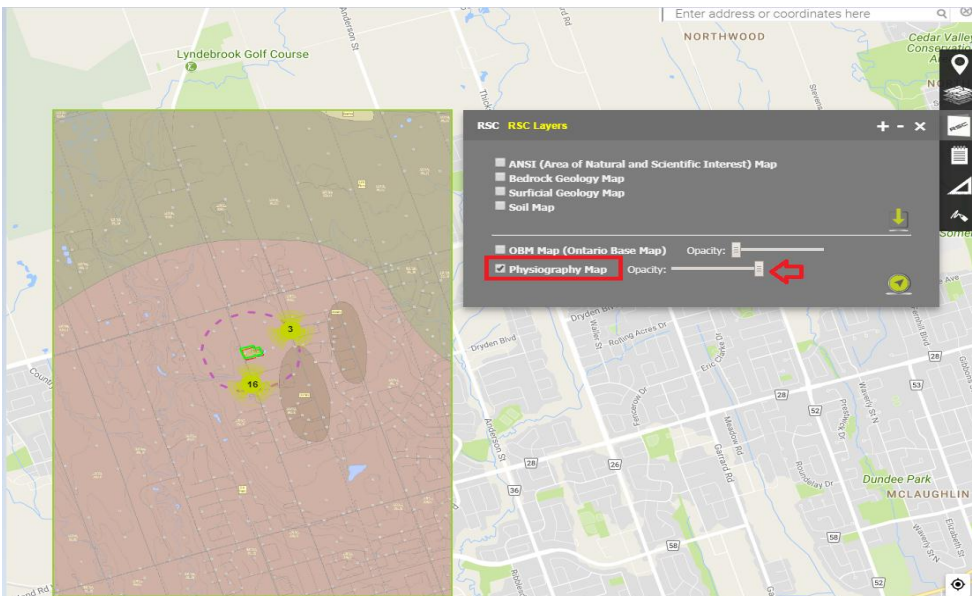
## [OBM Map \(Ontario Base Map\)](#)

This layer provides topographic information.



## [Physiography Map](#)

This data set visualizes the physical structure of the southern portion of Ontario.

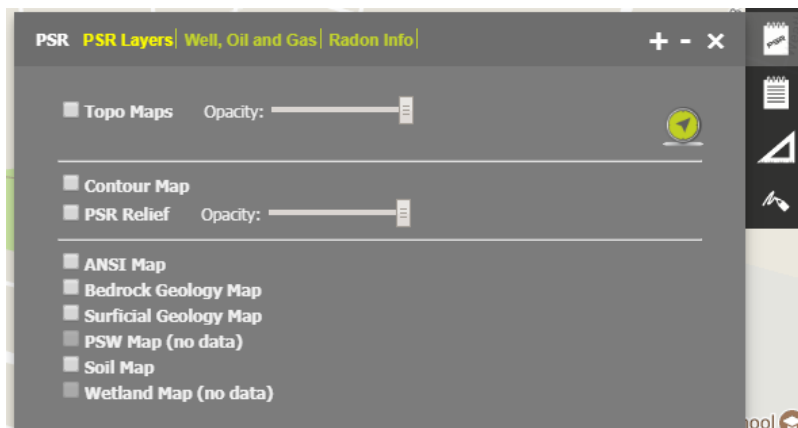


## [PSR – Physical Setting Report](#)

Physical Setting Report (PSR) icon will be visible in the navigation tool bar when the PSR report is ordered.

PSR offers the different map views including Geologic (Bedrock & Surficial), Soil and Wetland, and detail Well, Oil and Gas Data information, and Radon information. The PSR pdf report can be found under “Reports” off the main navigation bar.

\*\* If data is not available for the layer, then the layer won't be selectable and 'no data' will appear next to the layer name.



## [PSR Layers](#)

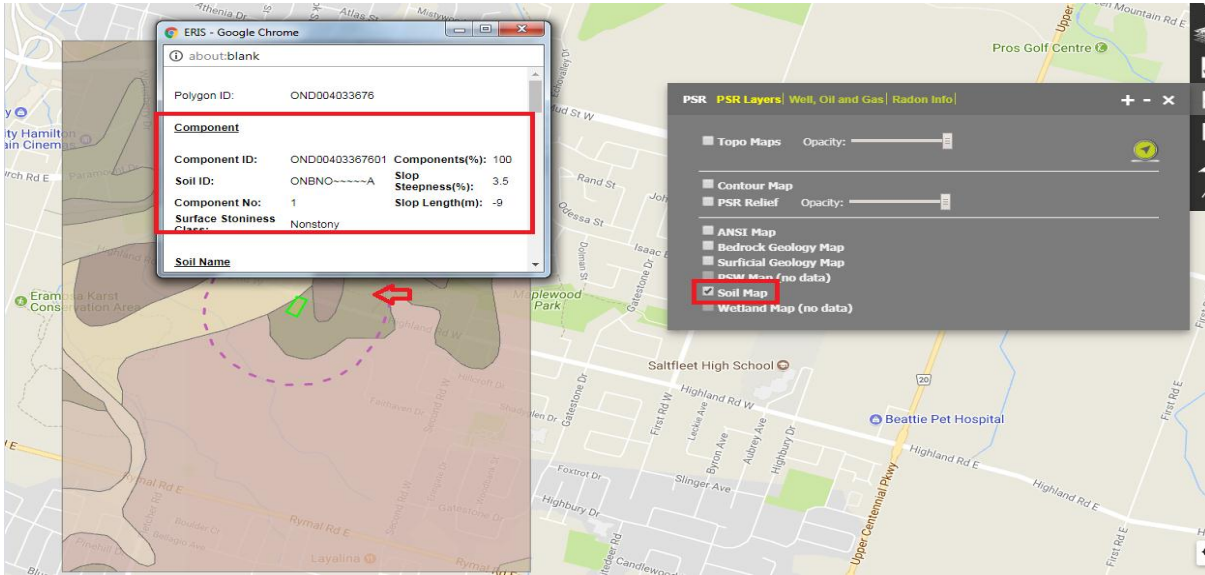
PSR Layers offers the view of Current Topo, Geologic (Bedrock & Surficial), Soil and Wetland maps. You may overlay Geologic, Soil and Wetland maps on top of Topo maps.

- Layers can be selected by clicking the box in front of the map name.
- Detailed information on the layers can be viewed by clicking on the map.

## [Soil Map](#)

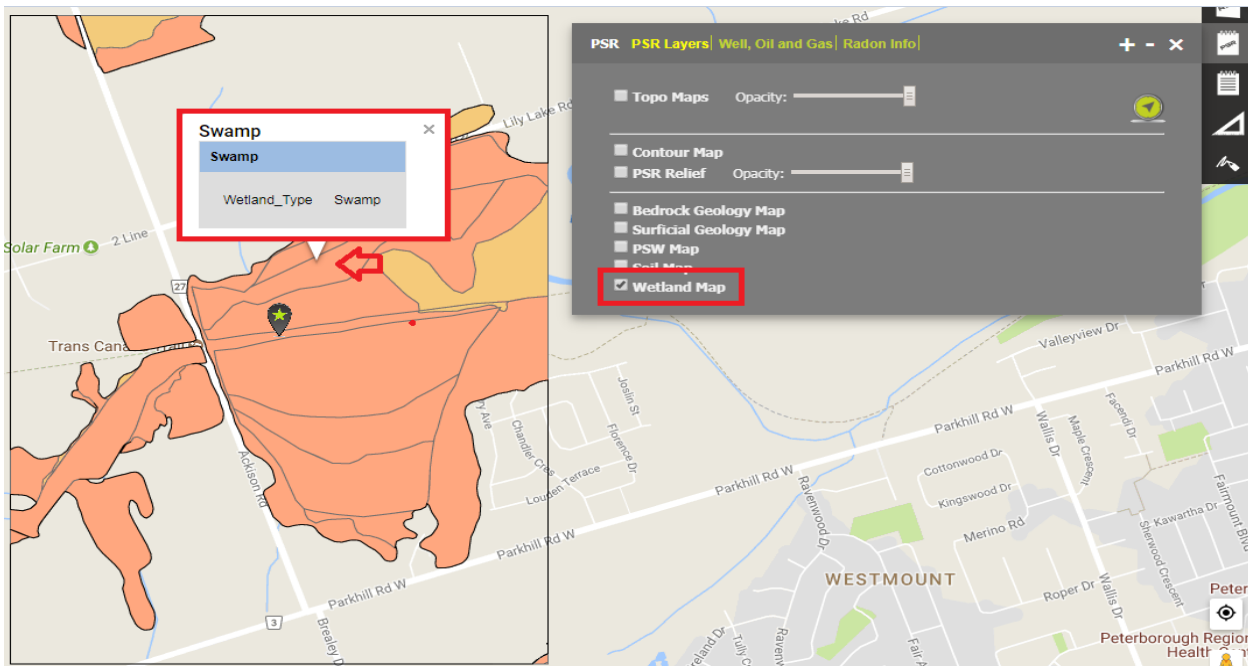
This map shows soil units around the target property, clicking on the map will display the detail information on the selected unit.





## Wetland Map

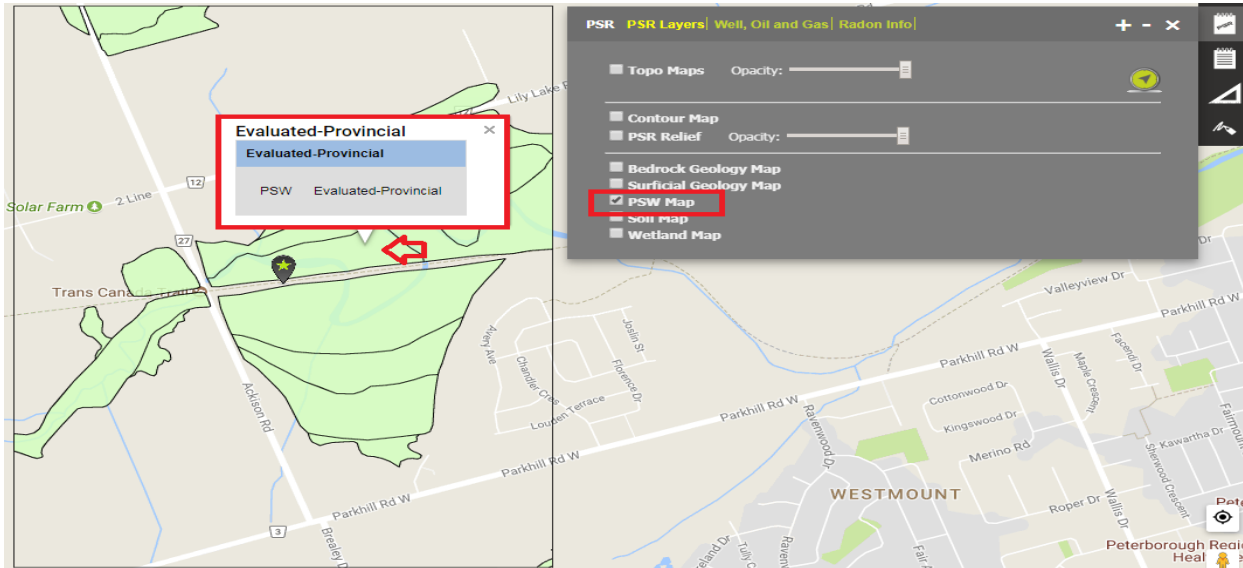
This map layer shows wetland existence, clicking on the map will display the detail information on the selected unit.



## [PSW - Provincial Significant Wetland Map](#)

This map layer shows wetland existence, clicking on the map will display the detail information on the selected unit.

\*\* PSW (Provincial Significant Wetland) Map layer is only available for Ontario and New Brunswick



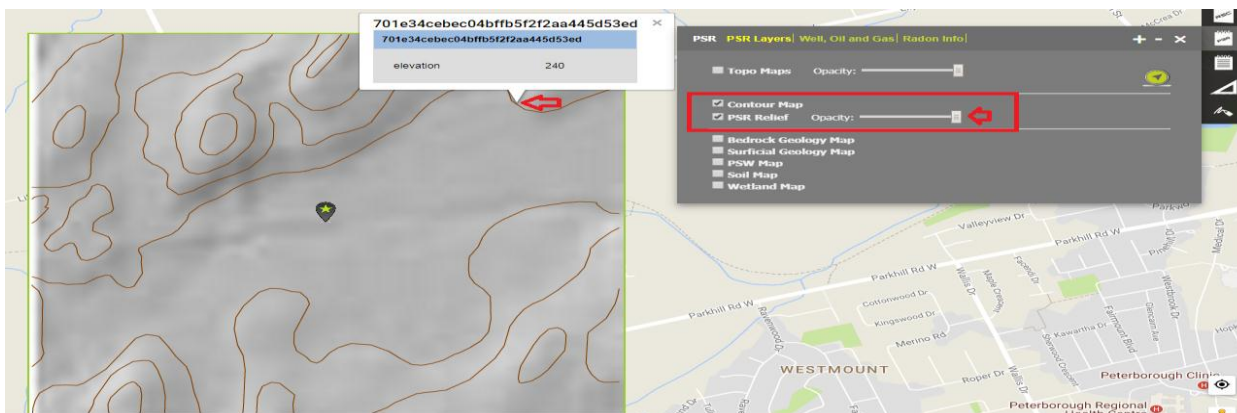
## [ANSI, Surficial and Bedrock Geology](#)

\*\* ANSI (Area of Natural and scientific Interest) Map layer is only available for Ontario.

Please refer to the RSC Layers section.

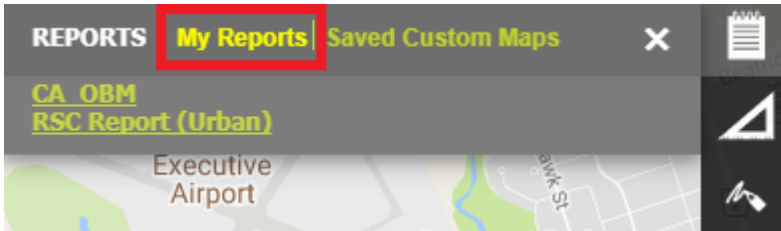
## [Contour and PSR Relief Map](#)

Shaded relief map, Interactive Contour lines layer displays surrounding topography in further detail.



## Reports

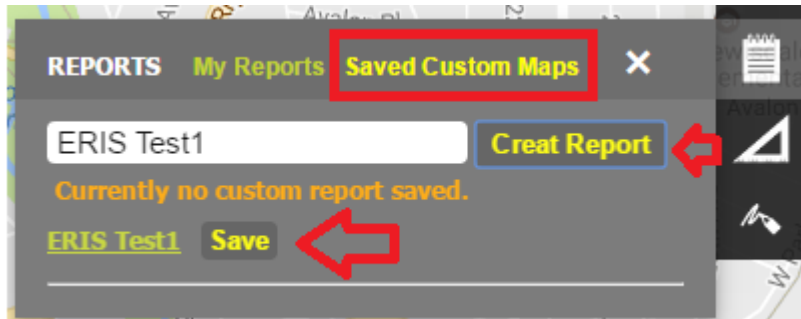
The REPORTS tab will display the link to all ordered products and report pdf files. All reports are within one click away from ERIS Xplorer.



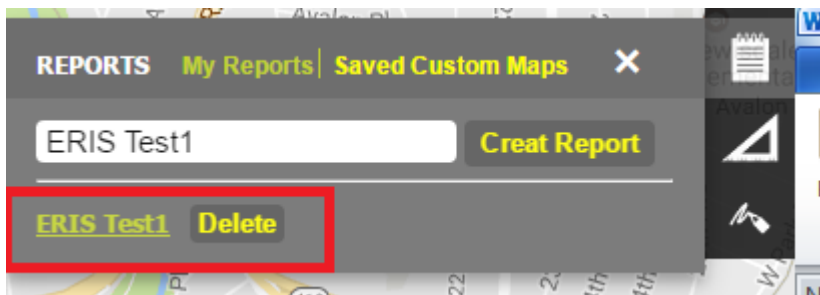
## Custom Saved Maps

Custom printed reports will display the customized maps created and saved by the users along with their annotations.

- Once desired comments/drawings are added to the map, click on 'Create Report'.
- Custom named report will be created; click on the 'Save' button to keep reports.



- Once the file is saved, click on 'Delete' to remove unwanted files.

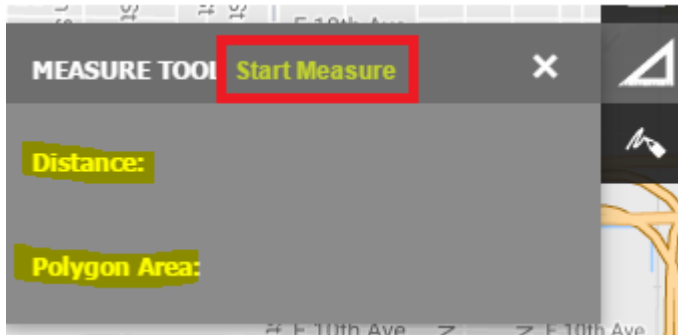


*Note: There is a limit of five files that can be saved at one time. Saved files will be available for 30 days from the date they are created.*

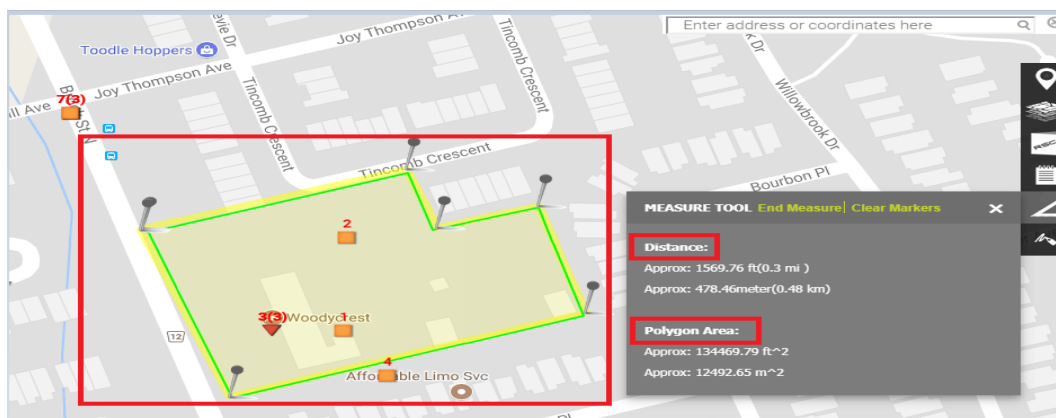
## Measure Tool

The Measure tool measures distances between sites or the area of a drawn object.

Clicking on the Measure Tool will open up the measure widget.



- Click on 'Start measure'.
- Place pins on the map by clicking the desired locations.
- Measured distance/area will be displayed in the Measure Tool box.
- The number of pins placed on the map is not limited.
- Clicking on 'Clear Markers' will clear the pins on the map.

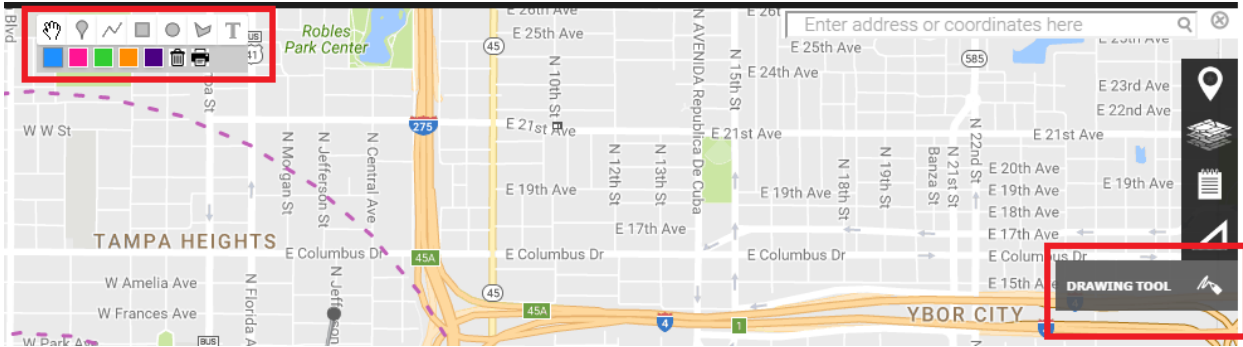


Clicking on 'End Measure' will bring you back to 'Start Measure'. The Measure Tool widget can be closed by clicking on the 'X'.



## Drawing Tool

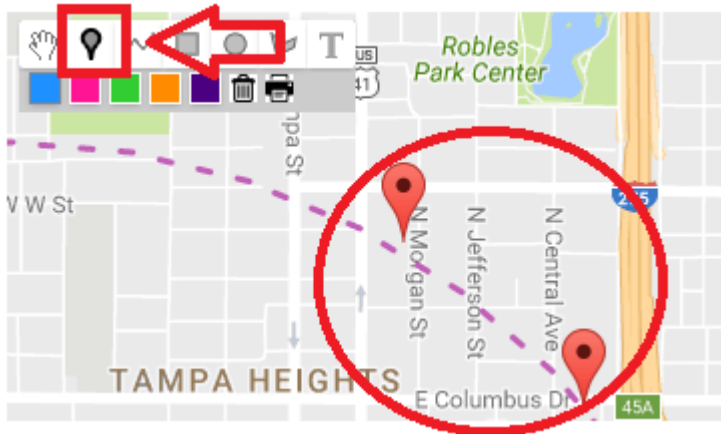
Clicking on the Drawing tool will open up the drawing bar at top of the Xplorer window.



## Location Marker



Specific locations can be marked using this map pin icon.

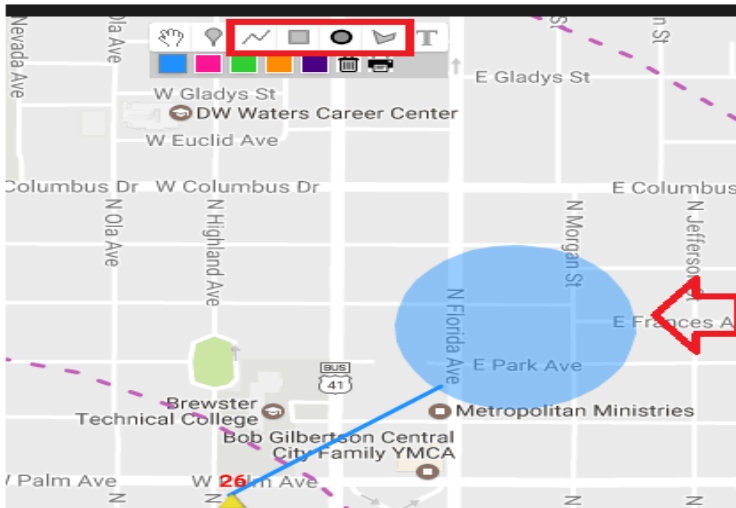




## Shapes



Shapes can be drawn by clicking on the desired shapes from the tool box.

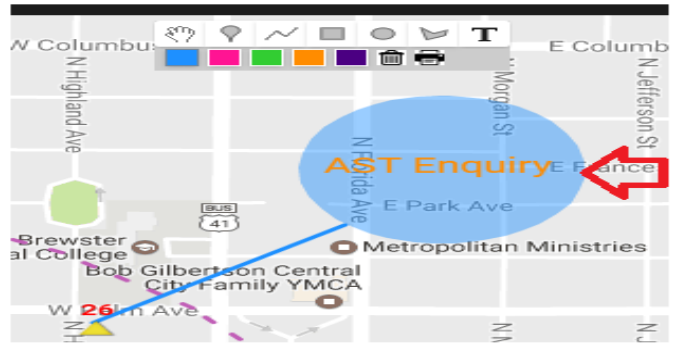
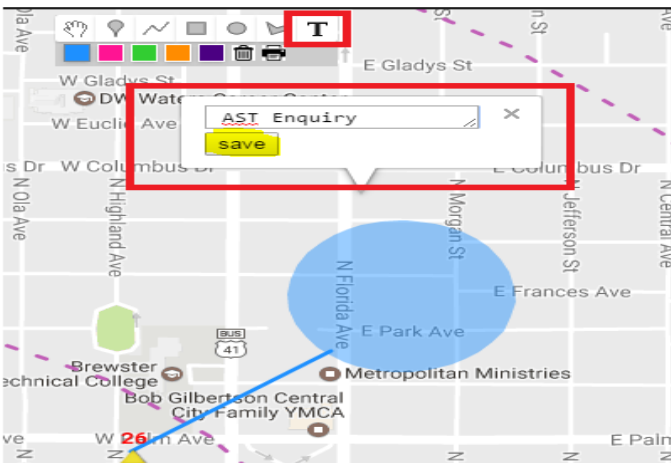


## Adding Comments



Click on the 'Text' tool, and then click on the desired location on the map.

- Enter text in the text box and click on 'save' to display the text directly on the map. It can move to any desired location on the map.



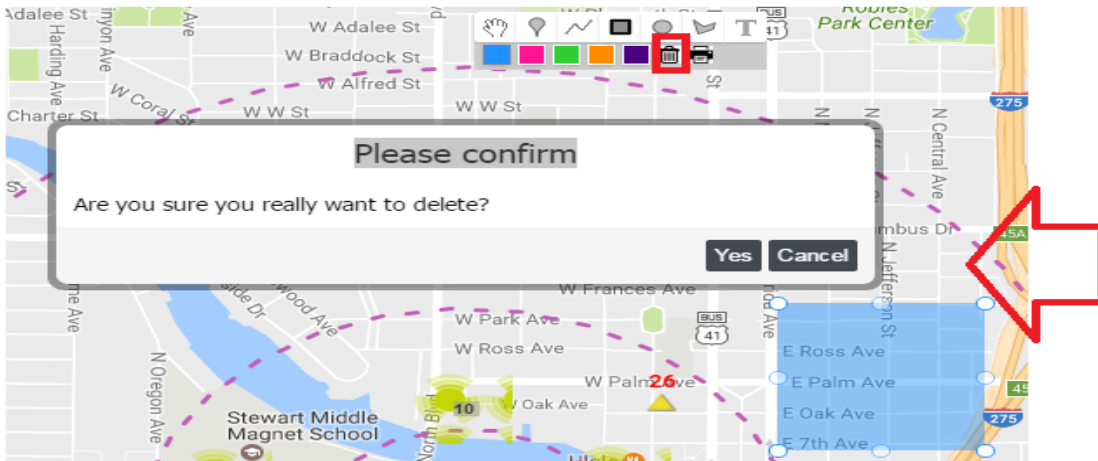


The Drawing tool bar contains a variety of colours for drawing shapes and adding comments.

## Delete



Any drawn shape or text can be deleted from the map by selecting the shape/text and clicking on the Delete option. A warning message will appear to confirm the user's request.



## Hand Icon



Once you have completed editing the map with the selected drawing tool, ensure to click on the 'hand icon' to end the drawing mode.

## Print



Once the desired comments have been added to the map, users need to do 2 things before they are able to print, specifically save the image and open the saved image as a pdf. ▲

When the printer icon is clicked, the screen capture will open in a new window as an image file. At the same time the Report navigation bar will open to “Saved Custom Maps”, which will allow the user to save any image files for future reference. After the image is saved, the user may click it to open it as a pdf file, and print it.

*Note: Please refer to ‘Custom Saved Maps’ section for more detailed information.*

## **[Customer Service/Contact](#)**

Should you have any issues or comments, please feel free to contact us by email: [support@erisinfo.com](mailto:support@erisinfo.com)

[Top of the Document](#)